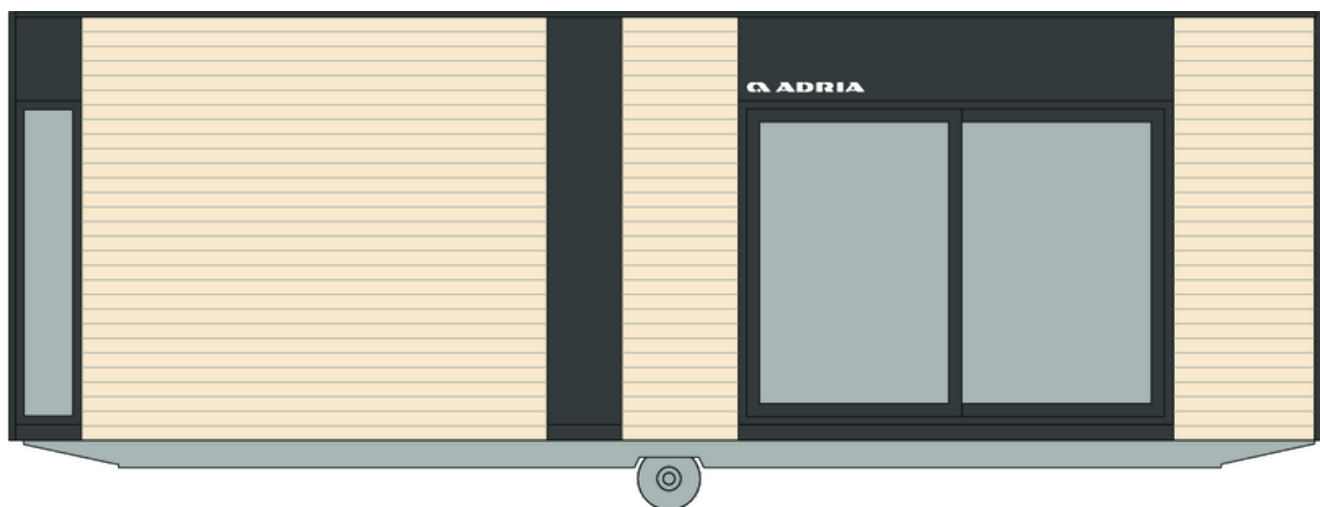


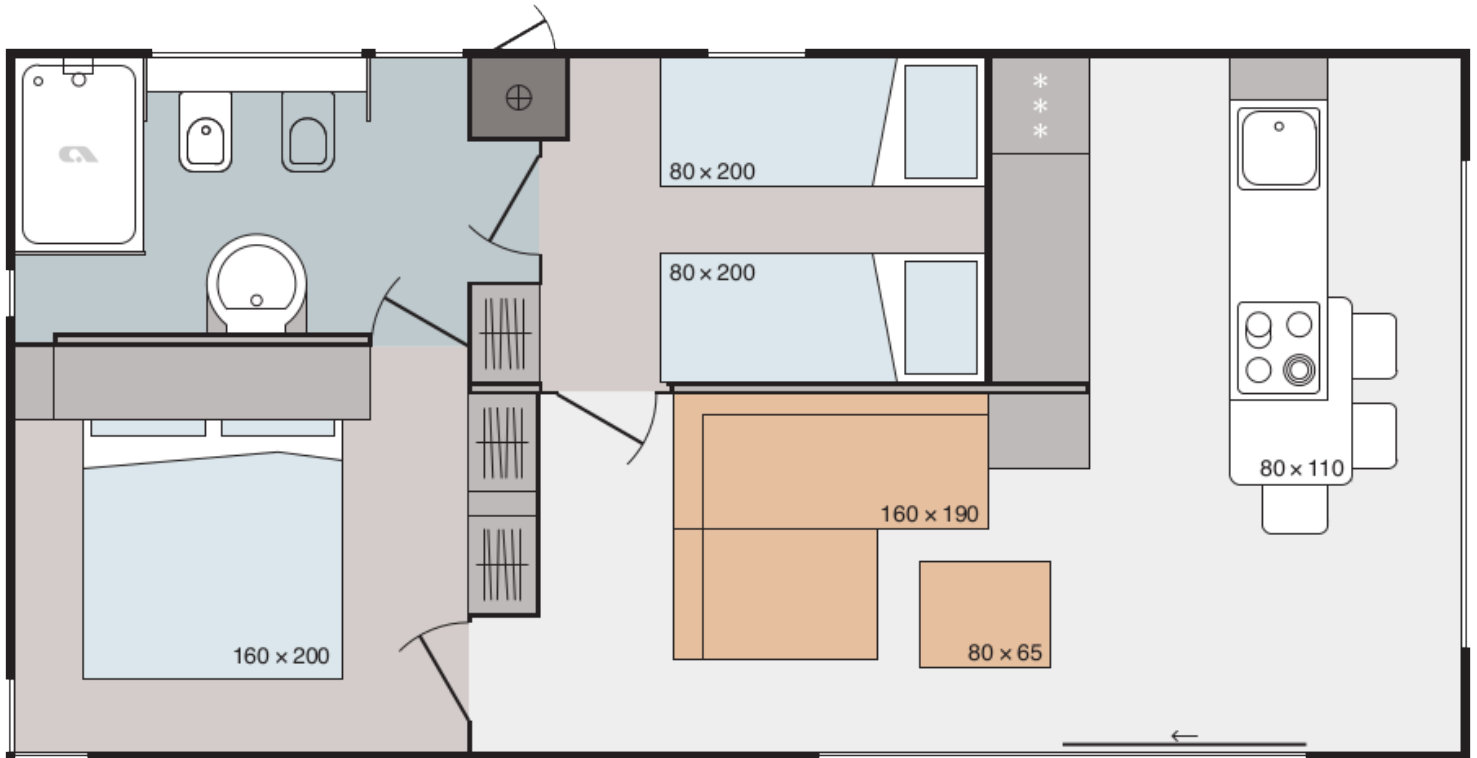
Xline 905 R21

Facade:



XLine 905

Layout:



XLine 905

A1 GENERAL

| | |
|---------------------|-------|
| Area | 40,50 |
| Number of beds | 4+2 |
| Number of bedrooms | 2 |
| Number of bathrooms | 1 |
| Height | 3,45 |
| Length | 9,00 |
| Width | 4,5 |

B1 CHASSIS

| | |
|--------------------------------------------------|---|
| 100% Galvanized Steel Chassis with leveling feet | X |
| Inflatable wheels | X |
| Detachable hook | X |
| Leveling Feet 1-2% | X |

B2 FLOOR

| | |
|--------------------------------------------------------|---|
| Vynil flooring | X |
| Adria Sandwich Technology ® Floor 40 mm (R=1,01 m2K/W) | X |

B3 EXTERIOR WALLS

| | |
|--------------------------------------------------------------------|---|
| Adria Sandwich Technology ®AST external walls 45 mm (R=1,35 m2K/W) | X |
| Decorative attic: Compact - matching colour of windows and doors | X |
| Decorative attic: Compact Anthracite | X |
| Decorative Cladding: Larchwood vertical | X |
| Decorative Cladding: Larchwood Blackline horizontal | O |
| Decorative Cladding: Trend PVC Ivory SOFT FS-301 vertical | O |
| Decorative Cladding: Trend PVC Mastic SOFT FS-301 vertical | O |
| Decorative Cladding: Trend PVC Anthracite SOFT FS-301 vertical | O |
| Decorative Cladding: Trend PVC Pearl Grey STONE FS-301 vertical | O |
| Decorative Cladding: Compact Anthracite | O |
| Decorative Cladding: Compact White | O |
| Decorative Cladding: Alucobond Bronze | O |
| Decorative Cladding: Alucobond Reflect | O |
| Decorative Cladding: Expanded Sheet Metal - Cortene Gold | O |

| | |
|--------------------------------------------------|---|
| Decorative Cladding: Expanded Sheet Metal - Grey | O |
| Corners: Color of cladding | X |

B4 WINDOWS AND DOORS

| | |
|------------------------------------------------------------------------------|---|
| Tinted windows in bathrooms | X |
| PVC windows and doors with termopan glass - anthracite outside, white inside | X |
| Panoramic sliding entrance door with security glass | X |
| PVC balcony door in bedroom with security glass | X |
| PVC balcony door in kitchen with security glass | X |
| Mosquito nets on all windows - matching colour of windows | O |
| Master cylinder | O |
| Master key (3 pieces) | O |
| ALU door of external box - matching colour of windows and doors | X |

B5 ROOF AND CEILING

| | |
|----------------------------------------------------------------|---|
| Single-pitched Roof | X |
| Roof construction class A (150 kg/m ²) | X |
| Roof construction class B (250 kg/m ²) | O |
| Roof type: Galvanized steel roof | X |
| Roof Colour: Anthracite | X |
| Roof type: PVC roof | O |
| Roof insulation glass wool 50 mm (R=1,25 m ² K/W) | X |
| Flat ceiling in all rooms - height 225 cm | X |
| Gutters | X |
| Vertical draining pipes - matching colour of windows and doors | O |
| Electric heated gutters and vertical drain pipes | O |

C0 INTERIOR

| | |
|---------------------------------------------------------|--------------|
| Furnishing Decor - STANDARD | AVANTGARDE |
| Furnishing Decor - OPTION 1 | SCANDINAVIAN |
| Textile Combination - STANDARD | AVANTGARDE |
| Textile Combination - OPTION 1 | SCANDINAVIAN |
| Dimout curtains in all rooms except bathroom and toilet | X |
| Daily curtains in all rooms except bathroom and toilet | O |
| Sofa Cushions - STANDARD | X |

| | |
|------------------------------------|---|
| Knitted blanket in bedroom | O |
| Door stopper | X |
| Metal doorhooks | X |
| Soft close for furniture | X |
| Double interior separation walls | X |
| Bathroom and toilet door with lock | X |

C1 LIVING ROOM

| | |
|-------------------------------------------------------------------|---|
| Cushions in living room | O |
| Designer comfortable sofa | X |
| Dinning table | X |
| Chairs | X |
| Open Wardrobe in living room | X |
| Hangers in living room (2 pcs) | X |
| Mirror in living room | X |
| Wardrobe in living room | X |
| Fire extinguisher (1kg) in living room | O |
| Fire blanket in living room | O |
| Smoke detector in living room | O |
| Electrical sockets in living room (2x) | X |
| Built-in ceiling spot LED lights in living room with 2-way switch | X |
| TV module in living room (1x TV socket, 2x el. socket) | X |
| UTP socket in living room | O |
| Ambiental LED lightning in living room | O |
| Adria Bluetooth sound system | O |

C2 KITCHEN

| | |
|---------------------------------------------|---|
| Gas hob on glass ceramic platform 4 burners | X |
| Glass ceramic hob with 4 burners | O |
| Induction hob with 4 burners | O |
| Extractor hood | X |
| Stainless steel sink without drainer | X |
| Wooden board in the kitchen | O |
| Built-in frdige with freezer 270 l | X |
| Built-in dishwasher 600mm | O |

| | |
|--------------------------------------------------|---|
| Built-in electrical oven 600 mm | O |
| Built-in microwave oven | O |
| Decorative wall in kitchen | X |
| Hangers in kitchen (2 pcs) | X |
| Electrical sockets over the kitchen counter (2x) | X |
| Built-in ceiling spot LED lights in kitchen | X |
| LED lightning above kitchen counter | X |

C3 MASTER BEDROOM

| | |
|----------------------------------------------------------------------|---------|
| Safe in master bedroom | O |
| Double bed with slatted bed base | 160X200 |
| Foam mattresses (25 kg/m ²) in master bedroom | X |
| Foam mattresses (35 kg/m ²) in master bedroom | O |
| Topper for mattresses in master bedroom | O |
| Upholstered bed in master bedroom | O |
| Ottoman upholstered bed in master bedroom | O |
| Wooden bed upholstery in master bedroom | O |
| Ottoman bed with wooden upholstery in master bedroom | O |
| Upholstered headboard in master bedroom | X |
| Foldable bed in master bedroom | O |
| Wardrobe in master bedroom | X |
| Mirror in master bedroom | X |
| USB charging modules in master bedroom (2 x C, 2 x A) | O |
| TV module in master bedroom (1x TV socket, 2x socket) | O |
| Built-in ceiling spot LED lights in master bedroom with 1-way switch | X |

C4 CHILDREN BEDROOM

| | |
|---------------------------------------------|--------|
| Single beds with slatted bed base | 80X200 |
| Foam mattresses PN25 in children's bedroom | X |
| Foam mattresses HR35 in children's bedroom | O |
| Underbed in children's room | O |
| Wooden headboard in children's bedroom | X |
| Wooden bed upholstery in children's bedroom | O |
| Upholstered bed in children's bedroom | O |
| Foldable bed in children's bedroom | O |

| | |
|--------------------------------------------------------|---|
| Cupboards over the bed in children's bedroom | X |
| Foldable desk in children's bedroom | O |
| Hangers in children's bedroom (2 pcs) | X |
| Mirror in children's bedroom | O |
| Reading LED lights in children's bedroom | X |
| Electrical sockets in children's bedroom (2 pcs) | X |
| USB charging module in children's bedroom (1x C, 1x A) | O |

C6 BATHROOM

| | |
|------------------------------------------------------------------------|--------|
| Shower cabin with low profile tray and decorative PVC shower wall | 80X120 |
| Shower sliding doors with security glass | X |
| Shower rail with adjustable sliding shower holder and rain shower head | X |
| Shower decorative PVC wall | X |
| Free standing wash basin with mixer tap | X |
| Rotating mirror with shelves in bathroom 1 | X |
| Ceramic toilet with toilet seat | X |
| Toilet roll holder | X |
| Hangers in bathroom (2 pcs) | X |
| Built-in toilet tank with saving function | X |
| Hairdryer in bathroom | O |
| Bathroom fan in bathroom | O |
| Built-in ceiling spot LED lights in bathroom | X |
| Electrical socket in bathroom | X |

D1 WATER AND GAS

| | |
|----------------------------------------------------------------|---|
| External connector to water facilities with pressure regulator | X |
| PVC water pipes Speedfit® | X |
| Central waste water outlet | O |
| External access to water heater | X |
| Gas water heater Vaillant 11l natural push | X |
| Electrical water heater 80l | O |
| Gas connection in box: Propan/Butan 30 mBar | X |
| Insulated water pipes with electrical heating | O |

D2 ELECTRICITY

| | |
|-----------------------------------------------------------|---|
| External connection 32A, 250V, 2P+E | X |
| Black flush installations, sockets and switches | X |
| Reading LED lights in all rooms | X |
| Ambiental LED lightning in living room and sleeping rooms | X |
| Ceiling spot LED lights in all rooms | X |
| Key lock | O |
| TV socket | X |
| USB socket | O |
| UTP socket | O |

D3 MULTIMEDIA

| | |
|-------------------------------------|---|
| TV holder | O |
| LED TV 32 inch | O |
| TV holder with double fold function | O |
| LED TV 43 inch | O |

D4 HEATING AND COOLING

| | |
|------------------------------------------------------------|---|
| Preinstallation for Airconditioning in living room | X |
| Airco sensors for entrance door | O |
| Airco sensors for all windows except bathrom | O |
| Airco Card | O |
| Air-conditioning white - mono split | O |
| Electrical heater in living room | O |
| Electrical heater in master bedroom | O |
| Electrical towel heater in bathroom | O |
| Electrical underfloor heating system Ebecco ® in all rooms | O |
| Additional control of underfloor heating in the bathroom | O |

E1 EXTERIOR EQUIPMENT

| | |
|--------------------------------------------------------|---|
| Awning LED light | X |
| External socket - matching colour of windows and doors | X |
| External socket under chassis | O |
| Terrace | O |

Legal Notice

The information on this website is provided "as is" and without warranty of any kind, expressed or implied, including (but not limited to) any implied warranties of merchantability and non-infringement of third party rights. While the information provided is believed to be accurate, it may include errors or inaccuracies. In no event shall Adria Home be liable to any person for any special, indirect or consequential damages relating to this material, unless caused by gross negligence or intentional misconduct. The purpose of this website is illustrative. The website may show visuals which may include some elements not belonging to the standard equipment or portray products which may not be available in all markets. Products may change in terms of technical specification and commercial details and in relation to specific regulations. You are advised to always contact your selected Adria representative to obtain all detailed information prior to purchasing.

Copyright

Copyright © Adria Home Ltd., ?rnomej, Slovenia 2019-20. All rights reserved. The text, images, graphics, sound files, animation files, video files, and their arrangement on the Adria Home website are all subject to copyright and other intellectual property protection. These objects may not be copied for commercial use or distribution, nor may these objects be modified or reposted to other sites. Adria Home website may contain images whose copyrights are attributable to third parties.



Adria Home Ltd.
Kanižarica 41, SI-8340 ?rnomej, Slovenija, Tel: +386 (0) 7 35 69 100, E-mail: info@adria-home.com
adria-home.com , www.adria-holidays.net

#AdriaHome
#AdriaGlamping

