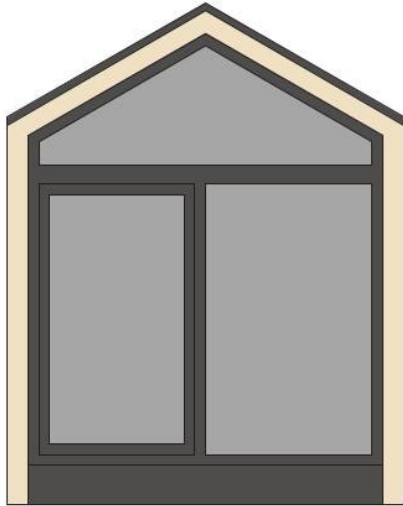




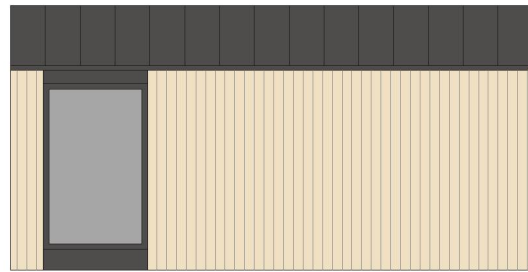
Tiny Home ROMANTIC

Facade:



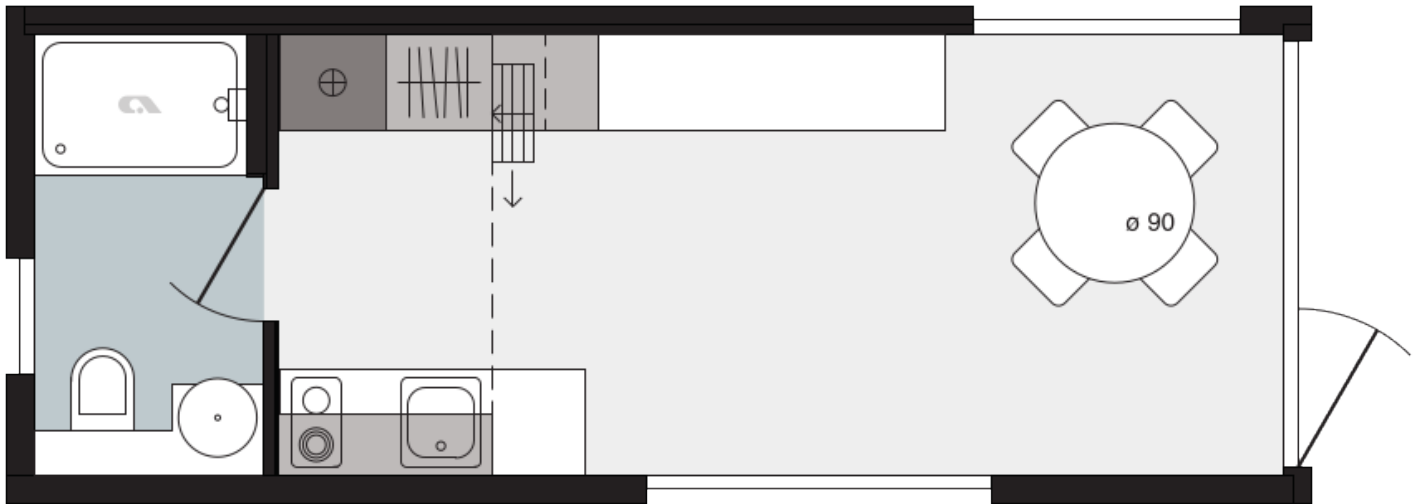
Tiny Home – Romantic

Facade 2:



Tiny Home – Romantic

Layout:



Tiny Home – Romantic



Tiny Home – Romantic

A1 GENERAL

Area	22,50
Number of beds	2+1
Number of bedrooms	1
Number of bathrooms	1
Length	7,50
Width	3,00
Height	3,90

B1 CHASSIS

100% galvanised steel tube 100/100/5 mm	X
---	---

B2 FLOOR

Bitumen floor protection	X
Vynil flooring	X
Structural Insulated Panels SIP Floor 100mm (R=2,39 m2K/W)	X

B3 EXTERIOR WALLS

Structural Insulated Panels SIP 100mm (R=2,39 m2K/W)	X
Other Three Sides: Larchwood Vertical	X
Decorative Cladding: Vestis RL 7016 Stucco	O
Decorative Cladding: Larchwood vertical	X
Other Three Sides: Larchwood Blackline vertical	O
Decorative Cladding: Larchwood Blackline vertical	O

B4 WINDOWS AND DOORS

Mosquito nets on all windows - matching colour of windows	O
Master cylinder	O
Master key (3 pieces)	O
External installation of windows and doors	X
Tinted windows in bathrooms	X
Swing entrance door with security glass and door holder	X
PVC windows and doors with termopan glass - anthracite outside and inside	X
Rolo shutters on bathroom windows	O
Panoramic sliding entrance door with security glass and door holder	O

Interior wooden window trim	X
-----------------------------	---

B5 ROOF AND CEILING

Duo-pitched Roof	X
Roof construction class B (250 kg/m ²)	X
Roof plates Vestis RAL 7016 Stucco	X
Vertical draining pipes - matching colour of windows and doors	X
Gutters	X
Structural Insulated Panels SIP Roof 130mm (R=3,15 m ² K/W)	X

C0 INTERIOR

Textile Combination - STANDARD		FOREST 2022
Furnishing Decor - STANDARD		FOREST 2022
Internal skirtings		X
Inner cladding for walls		X
Interior doors 40 mm with ALU doorframes		X
Door stopper		X
Bathroom and toilet door with lock		X
Soft close for furniture		X
Pull-out metal ladder		X, BLACK
Double interior separation walls		X
Dimout curtains in all rooms except bathroom and toilet		O
Metal fence on mansard		X, BLACK
Metal doorhooks in black colour		X
Seating cushions in living room		X

C1 LIVING ROOM

Dinning table	X
Cushions in living room	O
Mirror in living room	X
Adria Bluetooth sound system	O
TV module in living room (1x TV socket, 2x el. socket)	X
Ambiental LED lightning in living room	X
UTP socket in living room	O
Fire extinguisher (1kg) in living room	O
Fire blanket in living room	O

Smoke detector in living room	O
Chairs	X
Hangers in living room (2 pcs)	X
Extendable designer comfortable sofa	O
Multi-purpose wardrobe in living room	X
Wardrobe with drawers in living room	X
Wall lightning in living room	X
Wardrobe in living room	X

E1 EXTERIOR EQUIPMENT

LED strip above entrance	O
External socket - matching colour of windows and doors	X
Exterior LED lightning	X
Terrace with other equipment	O

C3 MASTER BEDROOM

Double bed with slatted bed base	160 X 200
Foam mattresses (25 kg/m ²) in master bedroom	X
Reading LED lights in master bedroom	X
USB charging modules in master bedroom (2 x C, 2 x A)	O
Electrical socket in master bedroom	X
Foam mattresses (35 kg/m ²) in master bedroom	O
Wall mounted light in master bedroom	X

C2 KITCHEN

Glass ceramic hob with 2 burners	X
Granite sink without drainer	X
Built-in extractor hood	X
Built-in fridge with freezer 84l	X
Electrical sockets over the kitchen counter (2x)	X
LED lightning above kitchen counter	X
Kitchen backsplash: Decorative laminate	X
Built-in ceiling spot LED lights in kitchen	X
Built-in dishwasher 450 mm	O
Pre-preparation of installations for built-in dishwasher	X
Microwave oven	O

Induction hob with 2 burners	O
------------------------------	---

C6 BATHROOM

Shower cabin with low profile tray and decorative PVC shower wall	X
---	---

Shower decorative PVC wall	X
----------------------------	---

Hangers in bathroom (2 pcs)	X
-----------------------------	---

Shower rail with sliding shower holder	X
--	---

Toilet roll holder	X
--------------------	---

Hairdryer in bathroom	O
-----------------------	---

Built-in ceiling spot LED lights in bathroom	X
--	---

Electrical socket in bathroom	X
-------------------------------	---

Fan wit humidity sensor on light switch and timer delay in bathroom	X
---	---

Built-in toilet tank with saving function connected to wash-stand	X
---	---

Ceramic toilet with toilet seat	X
---------------------------------	---

Extra shelves in bathroom	X
---------------------------	---

D1 WATER AND GAS

External connector to water facilities with pressure regulator	X
--	---

PVC water pipes Speedfit®	X
---------------------------	---

Internal access to water heater - door with lock	X
--	---

Insulated water pipes with electrical heating	X
---	---

Electrical water heater 80l	X
-----------------------------	---

D2 ELECTRICITY

Black flush installations, sockets and switches	X
---	---

External connection 32A, 250V, 2P+E	X
-------------------------------------	---

Key lock	O
----------	---

D4 HEATING AND COOLING

Air-conditioning black with fix wall thermostate - mono split	O
---	---

Electrical underfloor heating system Ebecco ® in all rooms	O
--	---

Airco sensors for entrance door	O
---------------------------------	---

Airco sensors for all windows except bathrom	O
--	---

Electrical heater in living room	O
----------------------------------	---

Electrical heater in master bedroom	O
-------------------------------------	---

Electrical towel heater in bathroom	X
-------------------------------------	---

D3 MULTIMEDIA

TV holder with double fold function	O
LED TV 32 inch	O
LED TV 43 inch	O

Legal Notice

The information on this website is provided "as is" and without warranty of any kind, expressed or implied, including (but not limited to) any implied warranties of merchantability and non-infringement of third party rights. While the information provided is believed to be accurate, it may include errors or inaccuracies. In no event shall Adria Home be liable to any person for any special, indirect or consequential damages relating to this material, unless caused by gross negligence or intentional misconduct. The purpose of this website is illustrative. The website may show visuals which may include some elements not belonging to the standard equipment or portray products which may not be available in all markets. Products may change in terms of technical specification and commercial details and in relation to specific regulations. You are advised to always contact your selected Adria representative to obtain all detailed information prior to purchasing.

Copyright

Copyright © Adria Home Ltd., ?rnomej, Slovenia 2019-20. All rights reserved. The text, images, graphics, sound files, animation files, video files, and their arrangement on the Adria Home website are all subject to copyright and other intellectual property protection. These objects may not be copied for commercial use or distribution, nor may these objects be modified or reposted to other sites. Adria Home website may contain images whose copyrights are attributable to third parties.



Adria Home Ltd.
Kanižarica 41, SI-8340 ?rnomej, Slovenija, Tel: +386 (0) 7 35 69 100, E-mail: info@adria-home.com
adria-home.com , www.adria-holidays.net

#AdriaHome
#AdriaGlamping

