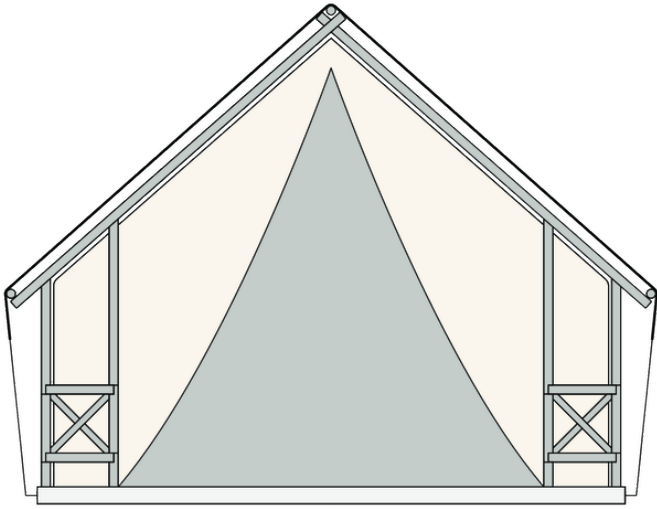




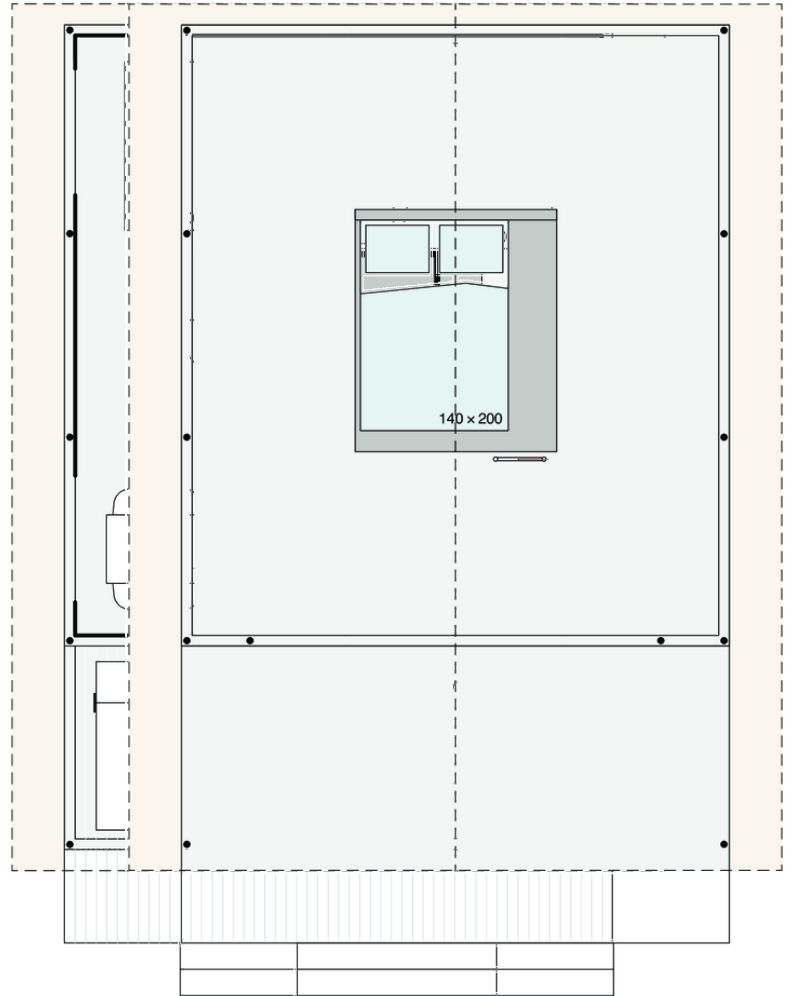
# Safari L FAMILY+

**Facade:**



**Safari L fasada**

**Layout Layout 2:**



**Safari L Family+ mansarda**

**A1 GENERAL**

Length interior/exterior	5,68/8,43
Width interior/exterior	5/5,83
Height interior/exterior	3,95/5,02
Area	38+7
Number of beds	6
Number of bedrooms	3
Number of bathrooms	1
Kitchen	X
Loft bedroom	X
Transport length	5,68
Transport width	2,28
Transport height	2,4
Dimension terrace	5x1,91

**B1 CHASSIS**

Powder coated steel chassis	X
Inflatable wheels	O
Cointainer transport kit	O
Detachble hook	O
Leveling Feet	X
Anchoring Kit - Steel rod	O
Anchoring Kit - Steel ancor	O
Detachble hook with third wheel	O

**B2 FLOOR**

Vynil flooring	X
Moisture resistant CTB-H floor 19 mm with ALU isolation floor foil	X

**B3 EXTERIOR WALLS**

PVC transport protection	X
Mosquito net preinstallation on entrance doors	X
Chassis cover Campshield FR1 20cm	O
Chassis cover PVC 20cm	X
Chassis cover PVC 45cm	O

Chassis cover Campshield FR1 45cm	O
Sturdy round wooden beams fi 100 mm	X
100% aluminium foldable pole construction	-
Powder coated steel connectors	X
Roof canvas PVC Sattler Complain 745 7M4 640g/m2 (FR)	X
Roof canvas TenGate Campshield FR1 420g/m2 (FR)	O
Interior canvas TenGate Campshield FR2 290g/m2 (FR)	O
Window with mosquito net	X
Internal canvas rolo	X
External cristal PVC rolo with Vecro tape	X
Front entrance opening section on zipper	X
Side wall opening sections on zipper	O
Mosquito net for entrance opening	O
Pad lock system	X
Master key for pad lock system	O
Winter cover	O
Stick for door zipper	X
Roof Subrenat CAMP420PC 2I 420g/m2	O
Interior canvas Subrenat CAMP420PC 2I 420g/m2	X
Side wall opening sections on zipper - safety exit	X
Detachable front side of the canvas	X

## C0 INTERIOR

Textile Combination - STANDARD	TENT
Furnishing Decor - STANDARD	GOLD CRAFT OAK
Cushions in bedrooms	O
Bedsread in master bedroom	O
Interior doors 25mm	X
Interior partition walls	X
Partition curtains	O
Mosquito net for beds	O

## C1 LIVING ROOM

Cushions in living room	O
Sofa bed extendable	X

Dinning table	X
Transparent glass for dinning table	O
Chairs	X
Mirror in living room	X
Fire extinguisher (1kg) in living room	O
Fire blanket in living room	O
Smoke detector in living room	O
Adria Bluetooth sound system	O

## C2 KITCHEN

Kitchen unit with 3 modules and hanging cupboards	X
Glass ceramic hob with 4 burners	X
Glass ceramic hob with 2 burners	O
Induction hob with 4 burners	O
Sink with drainer	X
Built-in integreted refrigerator with freezer 130l	X
Kitchen backsplash: White wall panel	O
LED lightning above kitchen counter	X
Electrical socket over the kitchen counter	X

## C3 MASTER BEDROOM

Double bed with slatted bed base	160x200
Foam mattresses (25 kg/m <sup>2</sup> ) in master bedroom	X
Foam mattresses (35 kg/m <sup>2</sup> ) in master bedroom	O
Topper for mattresses in master bedroom	O
Ottoman upholstered bed in master bedroom	O
Upholstered headboard in master bedroom	O
Bedside tables in master bedroom	X
Wardrobe in master bedroom	X
Safe in master bedroom	O
Reading LED lights in master bedroom	X
Electrical socket in master bedroom	X
Wooden bed upholstery in master bedroom	O
Upholstered bed in master bedroom	O
Ambiental LED lightning under the shelf in master bedroom	O

TV module in master bedroom (1x TV socket, 2x socket)	O
USB charging modules in master bedroom (2 x C, 2 x A)	O
Built-in wireless charger in master bedroom	O

#### C4 CHILDREN BEDROOM

Single beds with slatted bed base	2 x 80 x 200
Bunk bed in children's bedroom	O
Foam mattresses PN25 in children's bedroom	X
Foam mattresses HR35 in children's bedroom	O
Topper for mattresses in children's bedroom	O
Upholstered headboard in children's bedroom	O
Bedside tables in children's bedroom	X
Wardrobe in children's bedroom	X
Wooden bed upholstery in children's bedroom	O
Upholstered bed in children's bedroom	O

#### C5 CHILDREN BEDROOM 2

Single beds with slatted bed base	140x200
Foam mattresses PN25 in children's bedroom 2	X
Foam mattresses HR35 in children's bedroom 2	O
Topper for mattresses in children's bedroom 2	O
Wooden Ladder	X
Wooden headboard in children's bedroom 2	X
Safety fence	X
Safety net for loft bedroom	O

#### C6 BATHROOM

Shower cabin	90X75
Shower swing doors with security glass	X
Shower PVC wall	X
Shower rail with sliding shower holder	X
Wash-stand with mixer tap	X
Mirror with shelf in bathroom	X
Ceramic toilet with toilet seat	X
PVC toilet tank with saving function	X
Towel holder	X

Toilet roll holder	X
Hangers in bathroom (2 pcs)	X
Hairdryer in bathroom	O
Extractor fan in bathroom	X
Electrical socket in bathroom	X

### D1 WATER AND GAS

External connector to water facilities with pressure regulator	X
PVC water pipes Speedfit®	X
Central waste water outlet	O
Water filter in technical box	O
Internal access to water heater - door with lock	X
Electrical water heater 50l	X
Insulated water pipes with electrical heating	O

### D2 ELECTRICITY

External connection 32A, 250V, 2P+E	X
Reading LED lights in all rooms	X
Ambiental LED lightning in living room and sleeping rooms	O
TV socket	X
USB socket	X
UTP socket	O
Black flush installations, sockets and switches	X
External connection 32A, 400V, 3P+N+E	O

### D3 MULTIMEDIA

TV holder	O
TV holder with double fold function	O
LED TV 32 inch	O

### D4 HEATING AND COOLING

Air-conditioning white - mono split	O
Electrical heater in living room	O
Electrical towel heater in bathroom	O
Electrical underfloor heating system Ebecco ® in all rooms	O
Preinstallation for Airconditioning in living room	O

Electrical heater in master bedroom	O
-------------------------------------	---

**E1 EXTERIOR EQUIPMENT**

Covered terrace from Larchwood	X
--------------------------------	---

Extended terrace from Larchwood	O
---------------------------------	---

Stairs on the whole lenght	O
----------------------------	---

Table with chairs	O
-------------------	---

Lounge furniture with two chairs and coffe table	O
--	---

Sun loungers (2 pcs)	O
----------------------	---



### Legal Notice

The information on this website is provided "as is" and without warranty of any kind, expressed or implied, including (but not limited to) any implied warranties of merchantability and non-infringement of third party rights. While the information provided is believed to be accurate, it may include errors or inaccuracies. In no event shall Adria Home be liable to any person for any special, indirect or consequential damages relating to this material, unless caused by gross negligence or intentional misconduct. The purpose of this website is illustrative. The website may show visuals which may include some elements not belonging to the standard equipment or portray products which may not be available in all markets. Products may change in terms of technical specification and commercial details and in relation to specific regulations. You are advised to always contact your selected Adria representative to obtain all detailed information prior to purchasing.

### Copyright

Copyright © Adria Home Ltd., ?rnomej, Slovenia 2019-20. All rights reserved. The text, images, graphics, sound files, animation files, video files, and their arrangement on the Adria Home website are all subject to copyright and other intellectual property protection. These objects may not be copied for commercial use or distribution, nor may these objects be modified or reposted to other sites. Adria Home website may contain images whose copyrights are attributable to third parties.



Adria Home Ltd.  
Kanižarica 41, SI-8340 ?rnomej, Slovenija, Tel: +386 (0) 7 35 69 100, E-mail: info@adria-home.com  
adria-home.com , www.adria-holidays.net

#AdriaHome  
#AdriaGlamping

