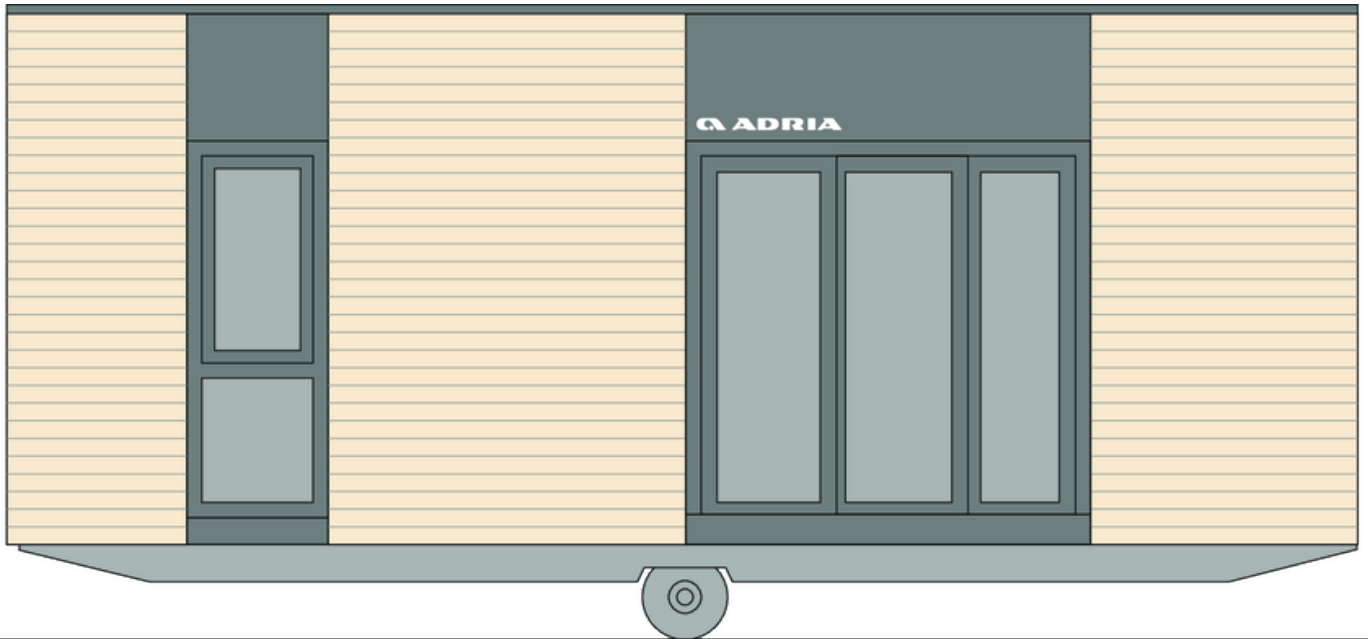


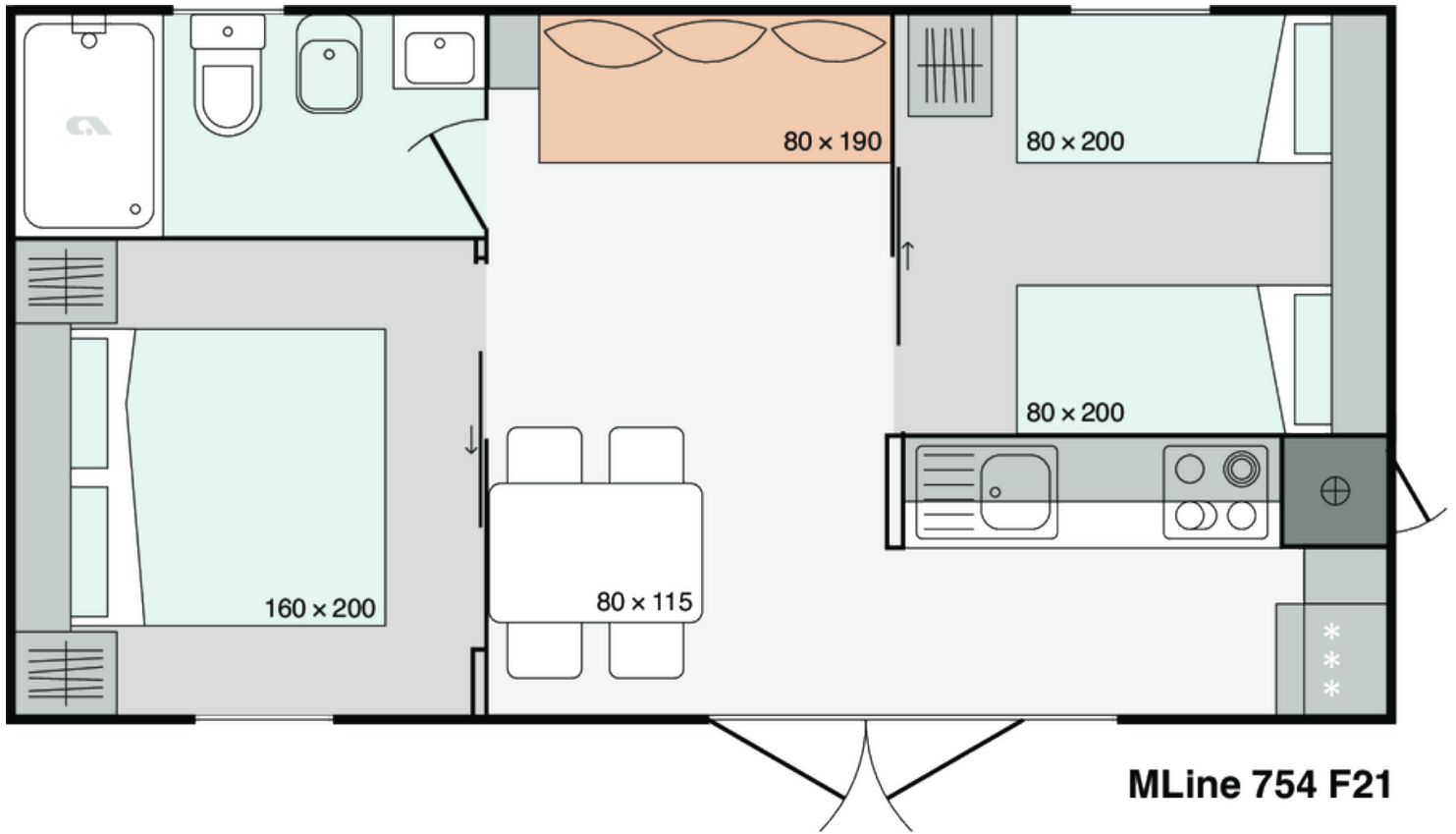
# Mline 754 F21

**Facade:**



**MLine 754 F21**

**Layout:**



**A1 GENERAL**

|                     |       |
|---------------------|-------|
| Area                | 30,00 |
| Number of beds      | 4+1   |
| Number of bedrooms  | 2     |
| Number of bathrooms | 1     |
| Height              | 3,45  |
| Length              | 7,50  |
| Width               | 4,00  |

**B1 CHASSIS**

|                               |   |
|-------------------------------|---|
| 100% Galvanized Steel Chassis | X |
| Inflatable wheels             | X |
| Detachble hook                | X |
| Leveling Feet 1-2%            | X |

**B2 FLOOR**

|  |   |
|--|---|
| Vynil flooring   | X |
| Moisture resistant CTB-H floor 19 mm with ALU isolation floor foil | X |

**B3 EXTERIOR WALLS**

|  |   |
|--|---|
| Adria Sanwdich Technology ®AST external walls 45 mm (R=1,35 m2K/W)   | X |
| Decorative attic: Metal sheet - matching colour of windows and doors | X |
| Other Three Sides: Facade VANILLA Jub Family 325                     | O |
| Other Three Sides: Facade GREEN Jub Vitality 115                     | O |
| Other Three Sides: Facade BROWN GREY Jub Family 15                   | O |
| Other Three Sides: Facade BLUE Jub Vitality 20                       | O |
| Cladding L/R: Facade BROWN GREY Jub Family 15                        | O |
| Cladding L/R: Facade VANILLA Jub Family 325                          | O |
| Cladding L/R: Facade GREEN Jub Vitality 115                          | O |
| Cladding L/R: Facade BLUE Jub Vitality 20                            | O |
| Cladding L/R: Facade without final layer                             | X |
| Cladding L/R: White Metal Panel                                      | O |
| Cladding L/R: Anthracite Metal Panel                                 | O |

|   |   |
|---|---|
| Cladding L/R: Adria PVC Whiteline horizontal                    | O |
| Cladding L/R: Larchwood horizontal                              | O |
| Cladding L/R: Larchwood vertical                                | O |
| Cladding L/R: Larchwood Blackline horizontal                    | O |
| Decorative Cladding: White Panel                                | O |
| Decorative Cladding: Larchwood vertical                         | O |
| Decorative Cladding: Larchwood Blackline horizontal             | O |
| Decorative Cladding: Anthracite panel                           | O |
| Decorative Cladding: Adria PVC Whiteline horizontal             | O |
| Decorative Cladding: Facade without final layer                 | X |
| Cladding L/R: Adria PVC Blackline horizontal                    | O |
| Cladding L/R: Trend PVC Ivory SOFT FS-301 vertical              | O |
| Cladding L/R: Trend PVC Mastic SOFT FS-301 vertical             | O |
| Cladding L/R: Trend PVC Anthracite SOFT FS-301 vertical         | O |
| Cladding L/R: Trend PVC Pearl Grey STONE FS-301 vertical        | O |
| Decorative Cladding: Trend PVC Ivory SOFT FS-301 vertical       | O |
| Decorative Cladding: Trend PVC Mastic SOFT FS-301 vertical      | O |
| Decorative Cladding: Trend PVC Anthracite SOFT FS-301 vertical  | O |
| Decorative Cladding: Trend PVC Pearl Grey STONE FS-301 vertical | O |
| Decorative Cladding: Facade VANILLA Jub Family 325              | O |
| Decorative Cladding: Facade GREEN Jub Vitality 115              | O |
| Decorative Cladding: Facade BLUE Jub Vitality 20                | O |
| Decorative Cladding: Facade BROWN GREY Jub Family 15            | O |
| Decorative Cladding: Larchwood horizontal                       | O |
| Decorative Cladding: Adria PVC Blackline horizontal             | O |
| Other Three Sides: Soft PVC Vnyl Silver Cedar vertical          | X |
| Other Three Sides: Trend PVC Ivory SOFT FS-301 vertical         | O |
| Other Three Sides: Trend PVC Mastic SOFT FS-301 vertical        | O |
| Other Three Sides: Trend PVC Anthracite SOFT FS-301 vertical    | O |
| Other Three Sides: Trend PVC Pearl Grey STONE FS-301 vertical   | O |
| Other Three Sides: Adria PVC Whiteline horizontal               | O |
| Other Three Sides: Adria PVC blackline horizontal               | O |
| Other Three Sides: Larchwood Horizontal                         | O |
| Other Three Sides: Larchwood Vertical                           | O |
| Other Three Sides: Larchwood Blackline horizontal               | O |

|                            |   |
|----------------------------|---|
| Corners: Color of cladding | X |
|----------------------------|---|

#### **B4 WINDOWS AND DOORS**

|   |   |
|---|---|
| PVC white windows and doors with termopan glass | X |
|---|---|

|                             |   |
|-----------------------------|---|
| Tinted windows in bathrooms | X |
|-----------------------------|---|

|   |   |
|---|---|
| Swing entrance door with security glass and door holder | X |
|---|---|

|   |   |
|---|---|
| Panoramic sliding entrance door with security glass | O |
|---|---|

|   |   |
|---|---|
| Built-in blinds on all windows - matching colour of windows and doors | O |
|---|---|

|   |   |
|---|---|
| Mosquito nets on all windows - matching colour of windows | O |
|---|---|

|                                   |   |
|-----------------------------------|---|
| Rolo shutters on bathroom windows | O |
|-----------------------------------|---|

|                 |   |
|-----------------|---|
| Master cylinder | O |
|-----------------|---|

|                       |   |
|-----------------------|---|
| Master key (3 pieces) | O |
|-----------------------|---|

|   |   |
|---|---|
| ALU door of external box - matching colour of windows and doors | X |
|---|---|

#### **B5 ROOF AND CEILING**

|                     |   |
|---------------------|---|
| Single-pitched Roof | X |
|---------------------|---|

|  |   |
|--|---|
| Roof construction class A (150 kg/m <sup>2</sup> ) | X |
|--|---|

|  |   |
|--|---|
| Roof construction class B (250 kg/m <sup>2</sup> ) | O |
|--|---|

|                                  |   |
|----------------------------------|---|
| Roof type: Galvanized steel roof | X |
|----------------------------------|---|

|                    |   |
|--------------------|---|
| Roof colour: White | X |
|--------------------|---|

|                         |   |
|-------------------------|---|
| Roof Colour: Anthracite | O |
|-------------------------|---|

|                     |   |
|---------------------|---|
| Roof type: PVC roof | O |
|---------------------|---|

|                               |   |
|-------------------------------|---|
| Secondary roof type: PVC foil | X |
|-------------------------------|---|

|  |   |
|--|---|
| Roof insulation glass wool 50 mm (R=1,25 m <sup>2</sup> K/W) | X |
|--|---|

|  |   |
|--|---|
| Flat heigher ceiling in all rooms 225 cm | X |
|--|---|

|         |   |
|---------|---|
| Gutters | X |
|---------|---|

|  |   |
|--|---|
| Vertical draining pipes - matching colour of windows and doors | O |
|--|---|

|                         |   |
|-------------------------|---|
| Gutter guard for leaves | O |
|-------------------------|---|

#### **C0 INTERIOR**

|                             |              |
|-----------------------------|--------------|
| Furnishing Decor - STANDARD | NATURAL 2022 |
|-----------------------------|--------------|

|                                |            |
|--------------------------------|------------|
| Textile Combination - STANDARD | PARIS 2022 |
|--------------------------------|------------|

|                                |                 |
|--------------------------------|-----------------|
| Textile Combination - OPTION 1 | MARSEILLES 2022 |
|--------------------------------|-----------------|

|                                |             |
|--------------------------------|-------------|
| Textile Combination - OPTION 2 | MILANO 2022 |
|--------------------------------|-------------|

|                                |             |
|--------------------------------|-------------|
| Textile Combination - OPTION 3 | RIMINI 2022 |
|--------------------------------|-------------|

|   |                      |
|---|----------------------|
| Dimout curtains in all rooms except bathroom and toilet | X                    |
| Daily curtains in all rooms except bathroom and toilet  | O                    |
| Sofa Cushions - STANDARD                                | SILVER MAGIC 2022    |
| Sofa Cushions - OPTION 1                                | FRESH WIND 2022      |
| Sofa Cushions - OPTION 2                                | DIAMOND SPARKLE 2022 |
| Sofa Cushions - OPTION 3                                | GOLDEN STAR 2022     |
| Interior separation walls 16 mm                         | X                    |
| Interior doors 25 mm with PVC doorframes                | X                    |
| Door stopper  | X                    |
| Metal doorhooks   | X                    |
| Soft close for furniture                                | X                    |
| Bathroom and toilet door with lock                      | X                    |

### C1 LIVING ROOM

|   |   |
|---|---|
| Sofa extendable   | O |
| Sofa  | X |
| Dinning table   | X |
| Chairs  | X |
| Wall shelf over the sofa in living room                           | X |
| Decorative wall in living room                                    | X |
| Sofa with decorative seams  | O |
| Sofa with decorative seams extendable                             | O |
| Hangers in living room (2 pcs)                                    | X |
| Mirror in living room   | X |
| Mini side table in living room                                    | X |
| Fire extinguisher (1kg) in living room                            | O |
| Fire blanket in living room                                       | O |
| Smoke detector in living room                                     | O |
| Electrical sockets in living room (2x)                            | X |
| Built-in ceiling spot LED lights in living room with 2-way switch | X |
| TV module in living room (1x TV socket, 2x el. socket)            | X |
| UTP socket in living room   | O |
| Ambiental LED lightning in living room                            | O |
| Adria Bluetooth sound system                                      | O |

**C2 KITCHEN**

|  |   |
|--|---|
| Gas hob on glass ceramic platform 4 burners      | X |
| Glass ceramic hob with 4 burners                 | O |
| Induction hob with 4 burners                     | O |
| Built-in extractor hood                          | X |
| Stainless steel sink with drainer                | X |
| Granite sink with drainer                        | O |
| Built-in bin separator 16L                       | O |
| Selfstanding fridge with freezer 217l            | X |
| Built-in fridge with freezer 270 l               | O |
| Built-in dishwasher 450 mm                       | O |
| Microwave oven                                   | O |
| Built-in microwave oven                          | O |
| Built-in drainer (scolapiatti)                   | O |
| Kitchen backsplash: Glass white wall panel       | X |
| Kitchen backsplash: White wall panel             | O |
| Kitchen backsplash: Decorative laminate          | X |
| Wooden wall panel with shelve over fridge        | X |
| Shelving in kitchen                              | O |
| Electrical sockets over the kitchen counter (2x) | X |
| Built-in ceiling spot LED lights in kitchen      | X |
| LED lightning above kitchen counter              | O |

**C3 MASTER BEDROOM**

|   |           |
|---|-----------|
| Safe in master bedroom                                    | O         |
| Double bed with slatted bed base                          | 160 x 200 |
| Foam mattresses (25 kg/m <sup>2</sup> ) in master bedroom | X         |
| Foam mattresses (35 kg/m <sup>2</sup> ) in master bedroom | O         |
| Upholstered bed in master bedroom                         | O         |
| Ottoman upholstered bed in master bedroom                 | O         |
| Wooden bed upholstery in master bedroom                   | O         |
| Ottoman bed with wooden upholstery in master bedroom      | O         |
| Wooden headboard in master bedroom                        | X         |
| Upholstered headboard in master bedroom                   | O         |



|  |   |
|--|---|
| Decorative wall panel above shelf in master bedroom                  | O |
| Bedside tables in master bedroom                                     | X |
| Wall shelf over the bed in master bedroom                            | X |
| Cupboards over the bed in master bedroom                             | O |
| Wardrobe in master bedroom   | X |
| Hangers in master bedroom (2 pcs)                                    | X |
| Mirror in master bedroom   | X |
| Ambiental LED lightning under the shelf in master bedroom            | O |
| Reading LED lights in master bedroom                                 | X |
| USB charging modules in master bedroom (2 x C, 2 x A)                | O |
| Built-in ceiling spot LED lights in master bedroom with 2-way switch | X |
| Electrical sockets in master bedroom (2x)                            | X |
| UTP socket in master bedroom   | O |
| TV module in master bedroom (1x TV socket, 2x socket)                | O |

#### **C4 CHILDREN BEDROOM**

|   |          |
|---|----------|
| Single beds with slatted bed base                             | 80 x 200 |
| Foam mattresses PN25 in children's bedroom                    | X        |
| Foam mattresses HR35 in children's bedroom                    | O        |
| Loft bed in children's bedroom                                | O        |
| Underbed in children's room                                   | O        |
| Wooden headboard in children's bedroom                        | X        |
| Upholstered headboard in children's bedroom                   | O        |
| Bedside tables in children's bedroom                          | X        |
| Wooden bed upholstery in children's bedroom                   | O        |
| Upholstered bed in children's bedroom                         | O        |
| Wooden wall panel alongside bed in children's bedroom         | O        |
| Upholstered wall panel alongside bed in children's bedroom    | O        |
| Wall shelf over the bed in children's bedroom                 | X        |
| Cupboards over the bed in children's bedroom                  | O        |
| Wardrobe in children's bedroom                                | X        |
| Decorative wall panel above shelve in children's bedroom      | O        |
| Hangers in children's bedroom (2 pcs)                         | O        |
| Mirror in children's bedroom                                  | O        |
| Ambiental LED lightning under the shelf in children's bedroom | O        |

|  |   |
|--|---|
| Reading LED lights in children's bedroom                                 | X |
| Electrical sockets in children's bedroom (2 pcs)                         | X |
| USB charging module in children's bedroom (1x C, 1x A)                   | O |
| Built-in ceiling spot LED lights in children's bedroom with 1-way switch | X |

## C6 BATHROOM

|  |          |
|--|----------|
| Shower cabin   | 80 x 120 |
| Shower cabin with low profile tray and decorative PVC shower wall      | O        |
| Shower sliding doors with security glass                               | X        |
| Shower PVC wall  | X        |
| Shower rail with sliding shower holder                                 | X        |
| Shower rail with adjustable sliding shower holder and rain shower head | O        |
| Wash-stand with mixer tap  | X        |
| Mirror with shelf in bathroom  | X        |
| Ceramic toilet with toilet seat  | X        |
| PVC toilet tank with saving function                                   | X        |
| Bidet with mixer tap in bathroom                                       | O        |
| Towel holder   | X        |
| Toilet roll holder   | X        |
| Hangers in bathroom (2 pcs)  | X        |
| Built-in toilet tank with saving function                              | O        |
| Hairdryer in bathroom  | O        |
| Built-in toilet tank with saving function connected to wash-stand      | O        |
| Bathroom fan in bathroom   | O        |
| Built-in ceiling spot LED lights in bathroom                           | X        |
| Electrical socket in bathroom  | X        |

## D1 WATER AND GAS

|  |   |
|--|---|
| External connector to water facilities with pressure regulator     | X |
| Additional connection to central wastewater system for toilet tank | O |
| Water filter in technical box                                      | O |
| PVC water pipes Speedfit®  | X |
| Central waste water outlet   | O |
| External access to water heater                                    | X |

|   |   |
|---|---|
| Gas water heater Vaillant 11l natural push    | X |
| Electrical water heater 50l                   | O |
| Electrical water heater 80l                   | O |
| Electrical water heater 100l                  | O |
| Gas connection in box: Propan/Butan 30 mBar   | X |
| External gas connection: Methan               | O |
| External gas connection: Propan/Butan 50 mbar | O |
| External gas connection: Propan/Butan 30 mbar | O |

**D2 ELECTRICITY**

|   |   |
|---|---|
| White flush mounted installations, sockets and switches | X |
| External connection 32A, 250V, 2P+E                     | X |
| External connection 32A, 400V, 3P+N+E                   | O |
| Key lock  | O |

**D3 MULTIMEDIA**

|                                     |   |
|-------------------------------------|---|
| TV holder                           | O |
| LED TV 32 inch                      | O |
| TV holder with double fold function | O |

**D4 HEATING AND COOLING**

|  |   |
|--|---|
| Preinstallation for Airconditioning in living room       | X |
| Airco sensors for entrance door                          | O |
| Airco sensors for all windows except bathrom             | O |
| Airco Card   | O |
| Air-conditioning white - mono split                      | O |
| Electrical heater in living room                         | O |
| Electrical heater in master bedroom                      | O |
| Electrical towel heater in bathroom                      | O |
| Additional control of underfloor heating in the bathroom | O |
| Electrical heater in children's room                     | O |
| Electrical heater in children's room 2                   | O |

**E1 OPTION PACKAGES**

|                       |   |
|-----------------------|---|
| Premium package Mline | O |
|-----------------------|---|

**E1 EXTERIOR EQUIPMENT**

|  |   |
|--|---|
| Awning LED light                                       | X |
| External socket - matching colour of windows and doors | X |
| External socket under chassis                          | O |
| Terrace  | O |

### Legal Notice

The information on this website is provided "as is" and without warranty of any kind, expressed or implied, including (but not limited to) any implied warranties of merchantability and non-infringement of third party rights. While the information provided is believed to be accurate, it may include errors or inaccuracies. In no event shall Adria Home be liable to any person for any special, indirect or consequential damages relating to this material, unless caused by gross negligence or intentional misconduct. The purpose of this website is illustrative. The website may show visuals which may include some elements not belonging to the standard equipment or portray products which may not be available in all markets. Products may change in terms of technical specification and commercial details and in relation to specific regulations. You are advised to always contact your selected Adria representative to obtain all detailed information prior to purchasing.

### Copyright

Copyright © Adria Home Ltd., ?rnomej, Slovenia 2019-20. All rights reserved. The text, images, graphics, sound files, animation files, video files, and their arrangement on the Adria Home website are all subject to copyright and other intellectual property protection. These objects may not be copied for commercial use or distribution, nor may these objects be modified or reposted to other sites. Adria Home website may contain images whose copyrights are attributable to third parties.



Adria Home Ltd.  
Kanižarica 41, SI-8340 ?rnomej, Slovenija, Tel: +386 (0) 7 35 69 100, E-mail: info@adria-home.com  
adria-home.com , www.adria-holidays.net

#AdriaHome  
#AdriaGlamping

