

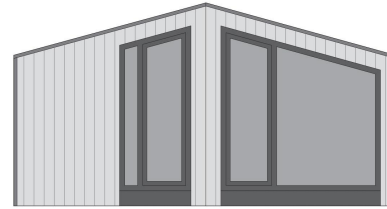


# ALPLINE 856

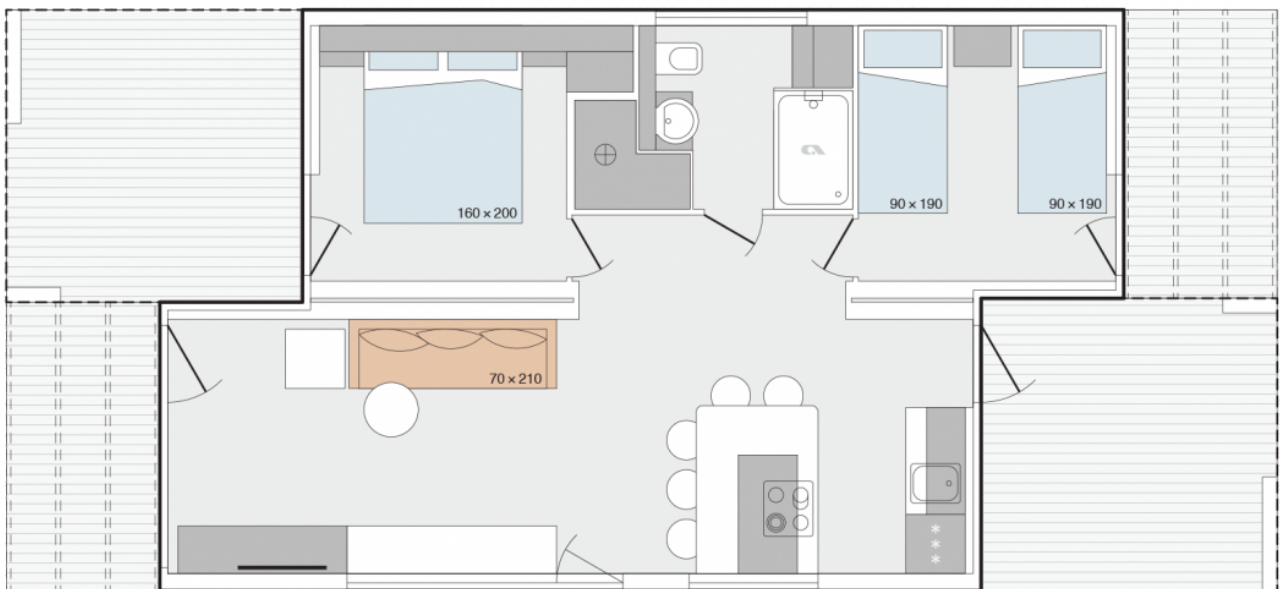
**Facade:**



**Facade 2:**



**Layout:**



**Alpline**

**A1 GENERAL**

Area	51,00
Number of beds	4
Number of bedrooms	2
Number of bathrooms	1
Height	3,4
Length	8,5
Width	6,00

**B1 CHASSIS**

100% galvanised steel tube 100/100/5 mm with leveling feet	X
--	---

**B2 FLOOR**

Vynil flooring	X
Bitumen floor protection	X
Structural Insulated Panels SIP Floor	X

**B3 EXTERIOR WALLS**

Structural Insulated Panels SIP	X
Front Cladding: Larchwood vertical	X
Other Three Sides: Larchwood Vertical	X
Other Three Sides: Facade panels Swisspearl	O
Other Three Sides: Facade panels Plano	O
Other Three Sides: Facade panels Rombo 40	O
Other Three Sides: Double covernig Eternit	O

**B4 WINDOWS AND DOORS**

Tinted windows in bathrooms	X
PVC windows and doors with termopan glass - anthracite outside, white inside	X
PVC balcony door in bedroom with security glass	X
PVC balcony door in children's bedroom wizh security glass	X
Mosquito nets on all windows - white	O
Rolo shutters on bathroom windows	O
Swing entrance door with security glass and door holder	X
PVC balcony door in kitchen with security glass	X

Rolo shutters on kitchen window	O
Blinds on the kitchen window	O
Master cylinder	O
Master key (3 pieces)	O

**B5 ROOF AND CEILING**

Duo-pitched Roof	X
Roof construction (350 kg/m <sup>2</sup> )	O
Roof construction class F (600 kg/m <sup>2</sup> )	X
Structural Insulated Panels SIP Roof	X
Snow Guards	O
Roof Slates Double Covering Eternit	O
Roof plates Swisspearl	O
Roof tile Gerard Qube Acoustic	X
Cathedral ceiling in all rooms 180/250 cm	X
Gutters	O

**C0 INTERIOR**

Furnishing Decor - STANDARD	NORDIC
Textile Combination - STANDARD	MOOD
Textile Combination - OPTION 1	MOOD
Dimout curtains in all rooms except bathroom and toilet	O
Cushions in bedrooms	O
Interior doors 40 mm with ALU doorframes	X
Door stopper	X
Notranje pregradne stene 56 mm	X
Metal doorhooks	X
Soft close for furniture	X
Fire extinguisher (1kg)	O
Fire blanket	O
Smoke detector	O
Seating cushions in living room	O

**C1 LIVING ROOM**

Wall decorative cladding	O
Mirror in living room	X

Adria Bluetooth sound system	O
Cushions in living room	O
Designer comfortable sofa	O
Barstools	X
Extendable designer comfortable sofa	O
Wall shelf over the sofa in living room	X
TV cupboard in living room	X
Hangers in living room (2 pcs)	X
Reading LED lights in living room	O

### C3 MASTER BEDROOM

Safe in master bedroom	O
Double bed with slatted bed base	160x200
Foam mattresses (25 kg/m <sup>2</sup> ) in master bedroom	X
Foam mattresses (35 kg/m <sup>2</sup> ) in master bedroom	O
Topper for mattresses in master bedroom	O
Ottoman bed with wooden upholstery in master bedroom	X
Upholstered headboard in master bedroom	O
Bedside tables in master bedroom	X
Cupboards over the bed in master bedroom	X
Wardrobe in master bedroom	X
Hangers in master bedroom (2 pcs)	X
Mirror in master bedroom	X
TV and aerial socket in master bedroom	X

### C4 CHILDREN BEDROOM

Single beds with slatted bed base	90x190
Foam mattresses PN25 in children's bedroom	X
Foam mattresses HR35 in children's bedroom	O
Topper for mattresses in children's bedroom	O
Loft bed in children's bedroom	O
Upholstered headboard in children's bedroom	O
Bedside tables in children's bedroom	X
Ottoman bed with wooden upholstery in children's bedroom	X
Cupboards over the bed in children's bedroom	X

Wardrobe in children's bedroom	X
Hangers in children's bedroom (2 pcs)	X

**C6 BATHROOM**

Shower cabin	120x80
Shower PVC wall	X
Shower tower with mixer tap	X
Shower rail with sliding shower holder	X
Shower rail with adjustable sliding shower holder and rain shower head	O
Wash-stand with two doors and mixer tap	X
Mirror with shelf in bathroom	X
Mirror in bathroom 1	X
Extra shelves in bathroom	X
Towel holder	X
Toilet roll holder	X
Hangers in bathroom (2 pcs)	X
Built-in toilet tank with saving function	X
Hairdryer in bathroom	O
Washing machine 450 mm	O

**D1 WATER AND GAS**

External connector to water facilities with pressure regulator	X
PVC water pipes Speedfit®	X
Pre-preparation of installations for washing machine	X
Internal access to water heater - door with lock	X
Electrical water heater 80l	X
Insulated water pipes	X

**D2 ELECTRICITY**

External connection 32A, 400V, 3P+N+E	X
Ambiental LED lighting in living room and sleeping rooms	X
USB socket	X
UTP socket	O
Key lock	O
TV socket	X

**D3 MULTIMEDIA**

TV holder	O
LED TV 32 inch	O
TV holder with double fold function	O

**D4 HEATING AND COOLING**

Airco sensors for entrance door	O
Airco sensors for all windows except bathrom	O
Air-conditioning white - mono split	O
Electrical heater in living room	O
Electrical heater in master bedroom	O
Electrical towel heater in bathroom 1	O
IR heating system with fixed thermostat	O
Electrical underfloor heating system Ebecco ® in all rooms	O
Ventilation with recuperation	X
Airconditioning with air distribution in all rooms	O
Gas central heating system with radiators	O
Electrical underfloor heating system Ebecco - only bathroom	O
Heat pump system with heating and cooling	O
Preinstallation for Airconditioning in living room	O

**E1 EXTERIOR EQUIPMENT**

Awning LED light	X
External socket - matching colour of windows and doors	X

**C2 KITCHEN**

Glass ceramic hob with 4 burners	X
Induction hob with 4 burners	O
Built-in hood with filter	X
Stainless steel sink without drainer	X
Built-in frdige with freezer	X
Built-in dishwasher 450 mm	O
Built-in electrical oven 600 mm	O
Microwave oven	O
Built-in microwave oven	O

Built-in drainer	O
Kitchen backsplash: White wall panel	X
LED lightning above kitchen counter	X



### Legal Notice

The information on this website is provided "as is" and without warranty of any kind, expressed or implied, including (but not limited to) any implied warranties of merchantability and non-infringement of third party rights. While the information provided is believed to be accurate, it may include errors or inaccuracies. In no event shall Adria Home be liable to any person for any special, indirect or consequential damages relating to this material, unless caused by gross negligence or intentional misconduct. The purpose of this website is illustrative. The website may show visuals which may include some elements not belonging to the standard equipment or portray products which may not be available in all markets. Products may change in terms of technical specification and commercial details and in relation to specific regulations. You are advised to always contact your selected Adria representative to obtain all detailed information prior to purchasing.

### Copyright

Copyright © Adria Home Ltd., Črnomelj, Slovenia 2019-20. All rights reserved. The text, images, graphics, sound files, animation files, video files, and their arrangement on the Adria Home website are all subject to copyright and other intellectual property protection. These objects may not be copied for commercial use or distribution, nor may these objects be modified or reposted to other sites. Adria Home website may contain images whose copyrights are attributable to third parties.

#### Adria Home Ltd.

Kanižarica 135, SI-8340 Črnomelj, Slovenija,

Tel: +386 (0) 7 35 69 100

E-mail: [info@adria-home.com](mailto:info@adria-home.com)

[adria-home.com](http://adria-home.com), [www.adria-holidays.net](http://www.adria-holidays.net)

#AdriaHome  
#AdriaGlamping

